



General Certificate of Secondary Education  
2025

Centre Number

--	--	--	--	--

Candidate Number

--	--	--	--

---

# Construction and the Built Environment

Unit 1

Introduction to the Built Environment

**MV18**

**[GCN11]**

**WEDNESDAY 4 JUNE, AFTERNOON**

---

## **Time**

1 hour, plus your additional time allowance.

## **Instructions to Candidates**

Write your Centre Number and Candidate Number in the spaces provided at the top of this page.

**You must answer the questions in the spaces provided.**

**Do not write on blank pages.**

Complete in black ink only. **Do not write with a gel pen.**

Answer **all six** questions.

## **Information for Candidates**

The total mark for this paper is 80.

Figures in brackets printed at the end of each question indicate the marks awarded to each question or part question.

Quality of written communication will be assessed in Question **1(f)**.

You are provided with an Insert for use with

Questions **3(c)** and **3(e)**.

1 The image shown in **Fig. 1** is typical of a specific type of structural form.

**Fig. 1**



(a) Name the type of structural form shown in **Fig. 1**.  
[2 marks]

---

(b) List **four** examples of the type of building occupancy this type of structure would be used for.  
[1 mark for each]

1. \_\_\_\_\_

2. \_\_\_\_\_

3. \_\_\_\_\_

4. \_\_\_\_\_

(c) Why is this type of structure suitable for the types of building occupancies you have listed in (b)?  
[2 marks]

---

---

---

---

---

---

---

(d) Explain **two** methods of how this structure will be joined together. [4 marks]

---

---

---

---

---

---

---







**Blank Page**

**(Questions continue overleaf)**

- 3 Domestic accommodation requires many different types of buildings, which must be specifically designed to meet the client's brief.

Identify the types of residential accommodation shown in this question and briefly state the distinguishing characteristics of each.

**Fig. 2**



**(a)** State the type of dwellings shown in **Fig. 2**. [1 mark]

---

**(b)** Describe the distinguishing characteristics of this type of building. [2 marks]

---

---

---

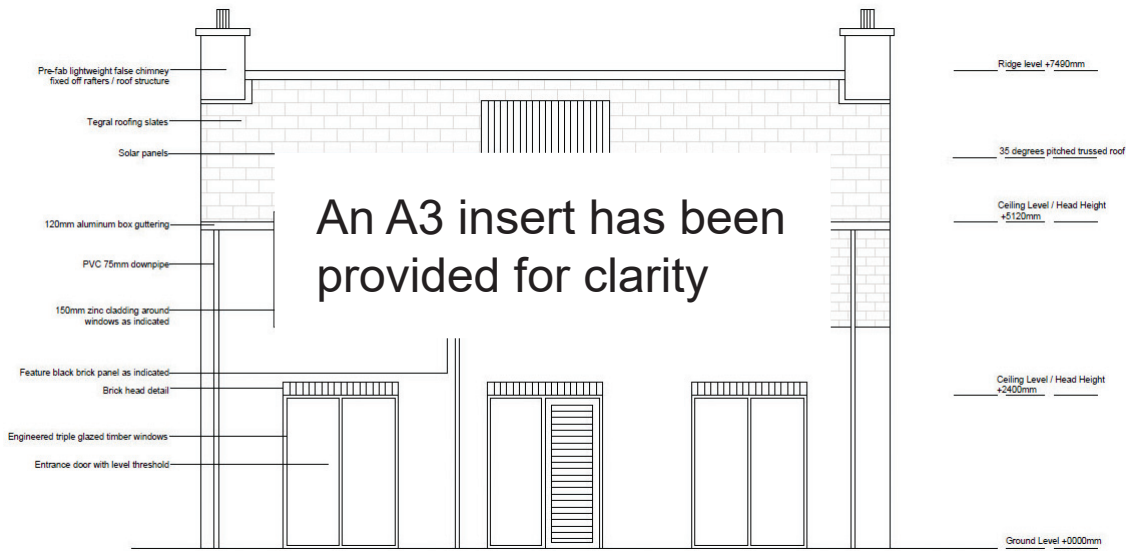
---

---

---

---

**Fig. 3**



**(c) State the type of dwelling shown in Fig. 3. [1 mark]**

---

**(d) Describe the distinguishing characteristics of this type of building. [2 marks]**

---

---

---

---

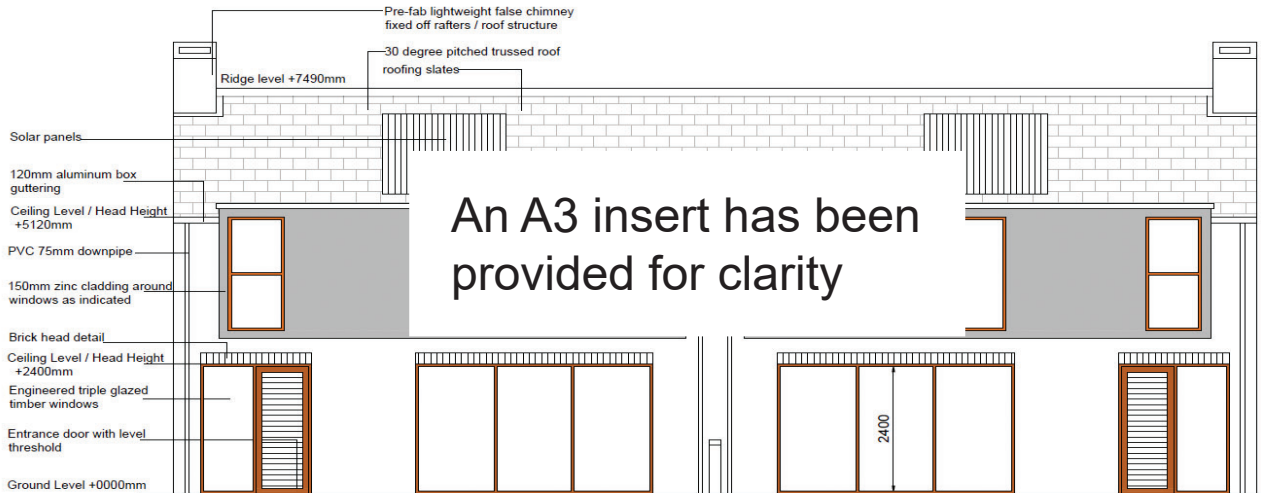
---

---

---

---

**Fig. 4**



**(e)** State the type of dwellings shown in **Fig. 4**. [1 mark]

---

**(f)** Describe the distinguishing characteristics of this type of building. [2 marks]

---

---

---

---

---

---

---

**Fig. 5**



**(g)** State the type of dwellings shown in **Fig. 5**. [1 mark]

---

**(h)** Describe the distinguishing characteristics of this type of building. [2 marks]

---

---

---

---

---

---

4 The Royal Institute of British Architect's Plan of Work (RIBA POW) simplifies the complete construction cycle into eight stages.

(a) State the **year** of the latest version. [1 mark]

---

(b) List the **eight stages** of this cycle. [1 mark for each]

0. \_\_\_\_\_

1. \_\_\_\_\_

2. \_\_\_\_\_

3. \_\_\_\_\_

4. \_\_\_\_\_

5. \_\_\_\_\_

6. \_\_\_\_\_

7. \_\_\_\_\_



5 (a) List **four** craft occupations. [1 mark for each]

1. \_\_\_\_\_
2. \_\_\_\_\_
3. \_\_\_\_\_
4. \_\_\_\_\_

(b) Describe the **roles** for the following occupations in the design team. [2 marks for each]

1. Quantity Surveyor

---

---

---

---

2. Building Services Engineer

---

---

---

---

6 There are four main categories of safety sign that can be found on a construction site. **State** the meaning of each of the following and **describe** its appearance.  
[3 marks for each]

(a) Mandatory Signs

---

---

---

---

(b) Safe Condition Signs

---

---

---

---

(c) Warning Signs

---

---

---

---

---

**This is the end of the question paper**

---

**Blank Page**

**Blank Page**

**Blank Page**

For Examiner's use only	
Question Number	Marks
1	
2	
3	
4	
5	
6	

<b>Total Marks</b>	
--------------------	--

Examiner Number

Permission to reproduce all copyright material has been applied for. In some cases, efforts to contact copyright holders may have been unsuccessful and CCEA will be happy to rectify any omissions of acknowledgement in future if notified.

Fig. 3

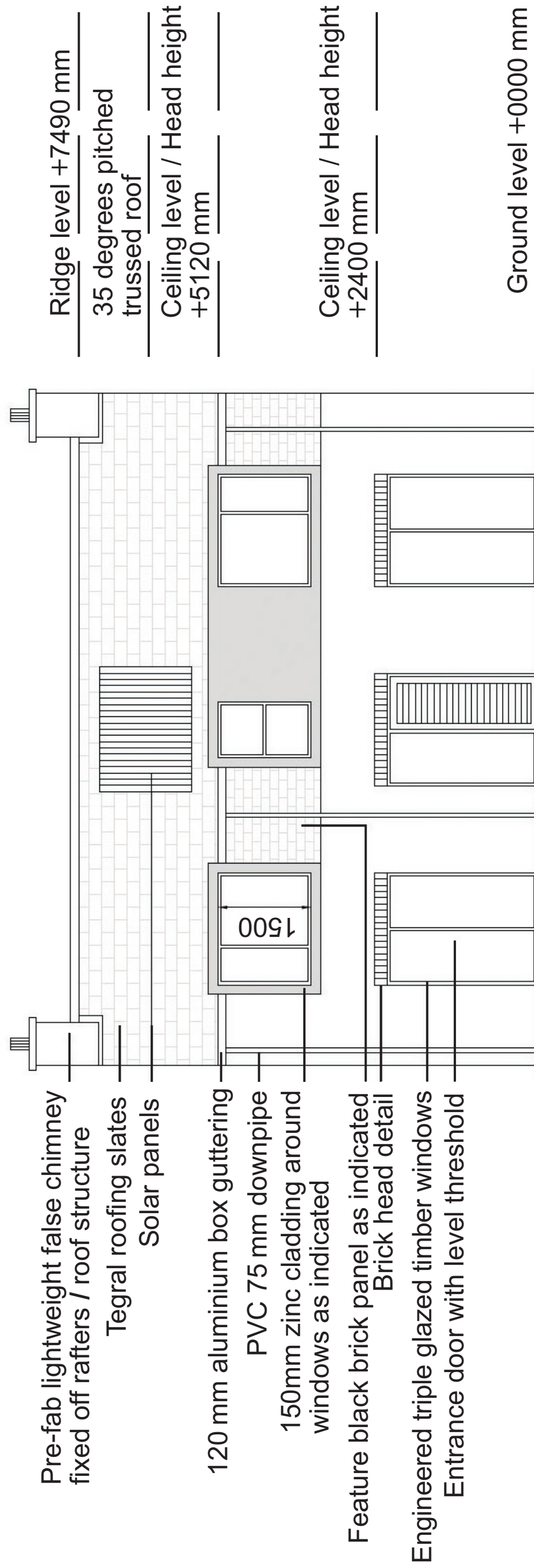


Fig. 4

